



RESIDENCE  
TWENTY EIGHT

# WELCOME

---

Residence 28 is a stunning new private estate of apartment residences, offering a modern and truly luxurious environment.

Surrounded by tranquil landscaped gardens, generous terracing, relaxation & entertainment areas and outdoor pool. Designed to feel part of the vibrant town centre but with the utmost privacy in mind.

Residence 28 consists of two buildings made up of 1, 2 & 3 bedroom apartments, and 3 & 4 bedroom Deluxe Penthouses offering private roof top pool and unobstructed sea views.



UNIQUE DESIGN  
& ELEGANCE

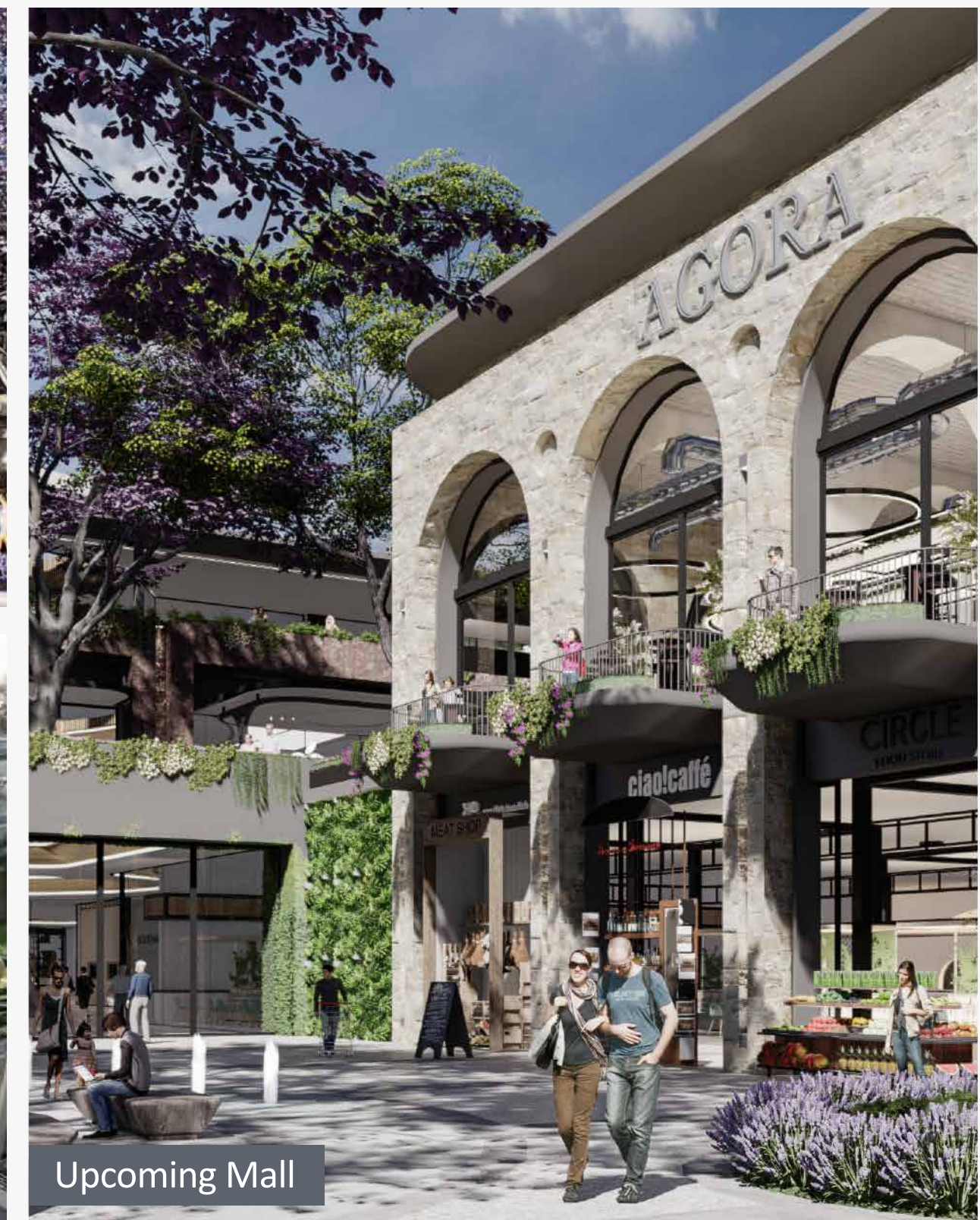


# RESIDENCE 28

*Prime Location, Exclusive Living*

Nestled in the esteemed Ayios Athanasios "Jumbo" Area of Limassol, Residence 28 boasts an enviable location that harmonizes convenience and exclusivity. With easy access to international schools, families can prioritize their children's education without compromising on quality or commute. Moreover, the anticipation of a new mall on the horizon ensures unparalleled shopping and entertainment options just a leisurely stroll away.

This residential gem epitomizes a blend of contemporary living and urban convenience, making it an ideal haven for those seeking a balanced and fulfilling lifestyle amidst the dynamic backdrop of Limassol.





## PLACES OF INTEREST

*Contemporary Living & Urban Convenience*

- |                              |               |
|------------------------------|---------------|
| 1. Foley's School            | Approx. 3.5km |
| 2. The Grammar School        | Approx. 2.5km |
| 3. AlphaMega Supermarket     | Approx. 1.3km |
| 4. Bank of Cyprus            | Approx. 1km   |
| 5. Beach                     | Approx. 2km   |
| 6. Kolonakiou Medical Centre | Approx. 2.3km |
| 7. Jumbo Hyperstore          | Approx. 150m  |
| 8. Biofitness Gym Club       | Approx. 150m  |

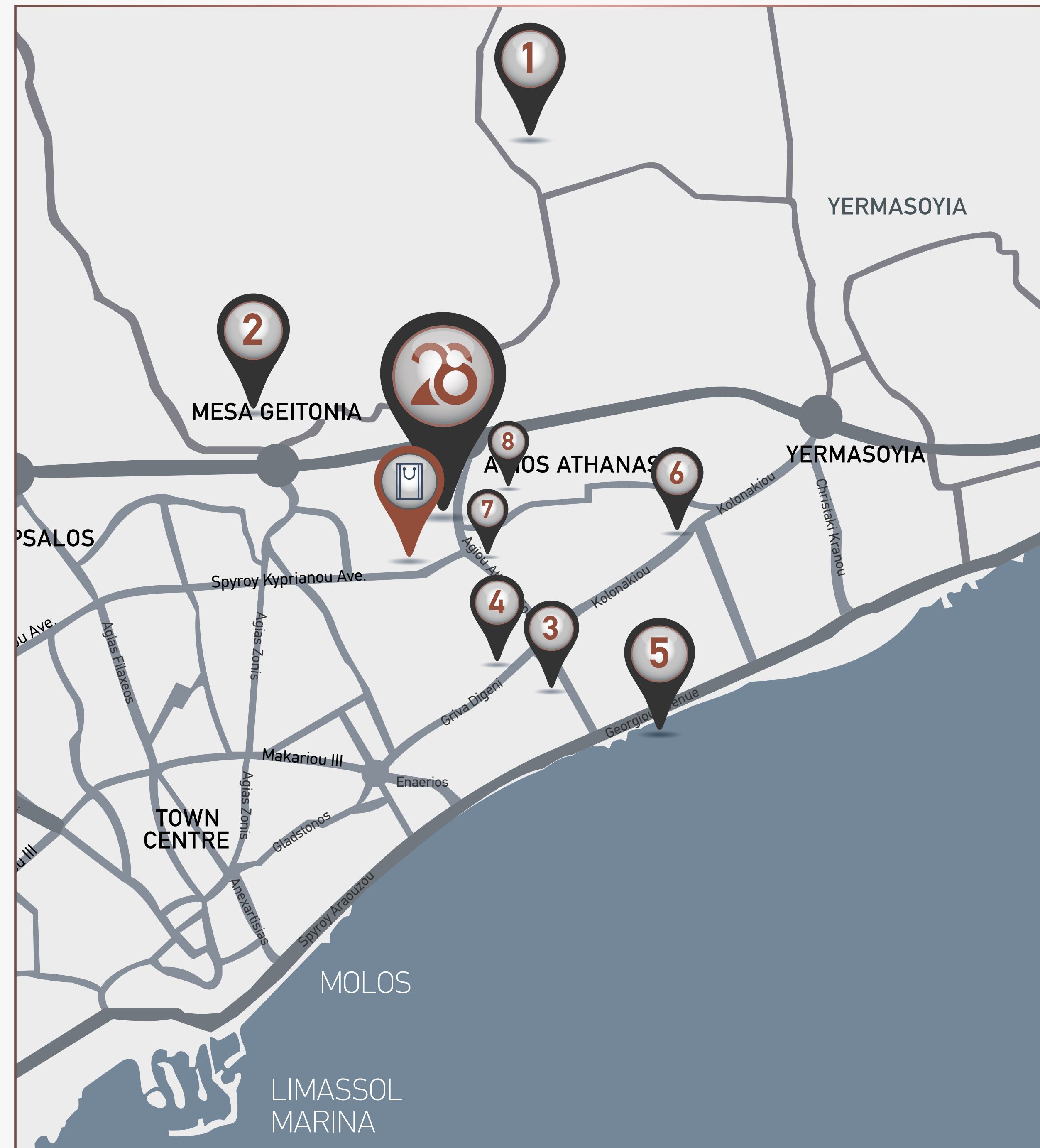


## UPCOMING MALL

*A One-Stop Retail & Family Entertainment Destination*

Residence 28 is just a leisurely stroll away from the anticipated new mall which is expected to offer:

- Family entertainment activities which include kids play/ learning area and gaming arcade.
- A family dining experience in a modern village style piazza.
- A huge variety of restaurants and coffee shops.
- An exciting retail experience covering all levels of retail customer profiles.
- An Agora market, where local specialized products and services can be obtained.
- Access to a public park covering more than 5000 sqm.



## ELEVATED LIVING

*Where Functionality Meets Style*

Step into a realm of comfort and functionality with this spacious abode, meticulously crafted to elevate your quality of life. Designed with both practicality and style in mind, the open-plan living room and dining area beckon for cherished moments with family and friends, offering an ideal setting for both intimate gatherings and lively social evenings. Seamlessly integrated, the modern kitchen boasts an ergonomic layout, promising a delightful culinary journey every day.

Embrace the joy of living in a space where every detail is thoughtfully considered, where functionality meets luxury, and where the moments you share become the cornerstone of cherished memories.



# TRANQUIL OPULENCE

## *Unmatched Elegance of Private Spaces*

Each space is meticulously designed to evoke a sense of tranquility and opulence, offering a sanctuary for relaxation and rejuvenation. Every detail is carefully curated to create an ambiance of timeless elegance. The bedrooms are havens of comfort, adorned with plush bedding and bespoke decor, while the bathrooms are showcases of modern indulgence, featuring lavish fixtures and spa-like amenities.

Experience a harmonious blend of style and functionality, where every moment spent in these exquisite spaces is a testament to refined living at its finest.







## THE FUTURE OF HOME LIVING

### *The Smart Home Features of Residence 28*

Each apartment is equipped with a comprehensive suite of modern amenities designed to enhance your living experience. From the moment you step inside, you'll be greeted by a smart control panel, putting the power of automation at your fingertips. Adjust lighting to suit your mood with smart light switches, while motion sensors and open/close detection sensors provide peace of mind with advanced security measures. Stay comfortable year-round with temperature and humidity sensors, complemented by smart climate control for underfloor heating, A/C, and boiler systems. Our commitment to safety extends further with water leak detectors, ensuring your home remains protected. And with smart curtain control, you can effortlessly set the ambiance for every occasion.

Experience the epitome of contemporary living at Residence 28, where every detail is designed with your comfort and convenience in mind.



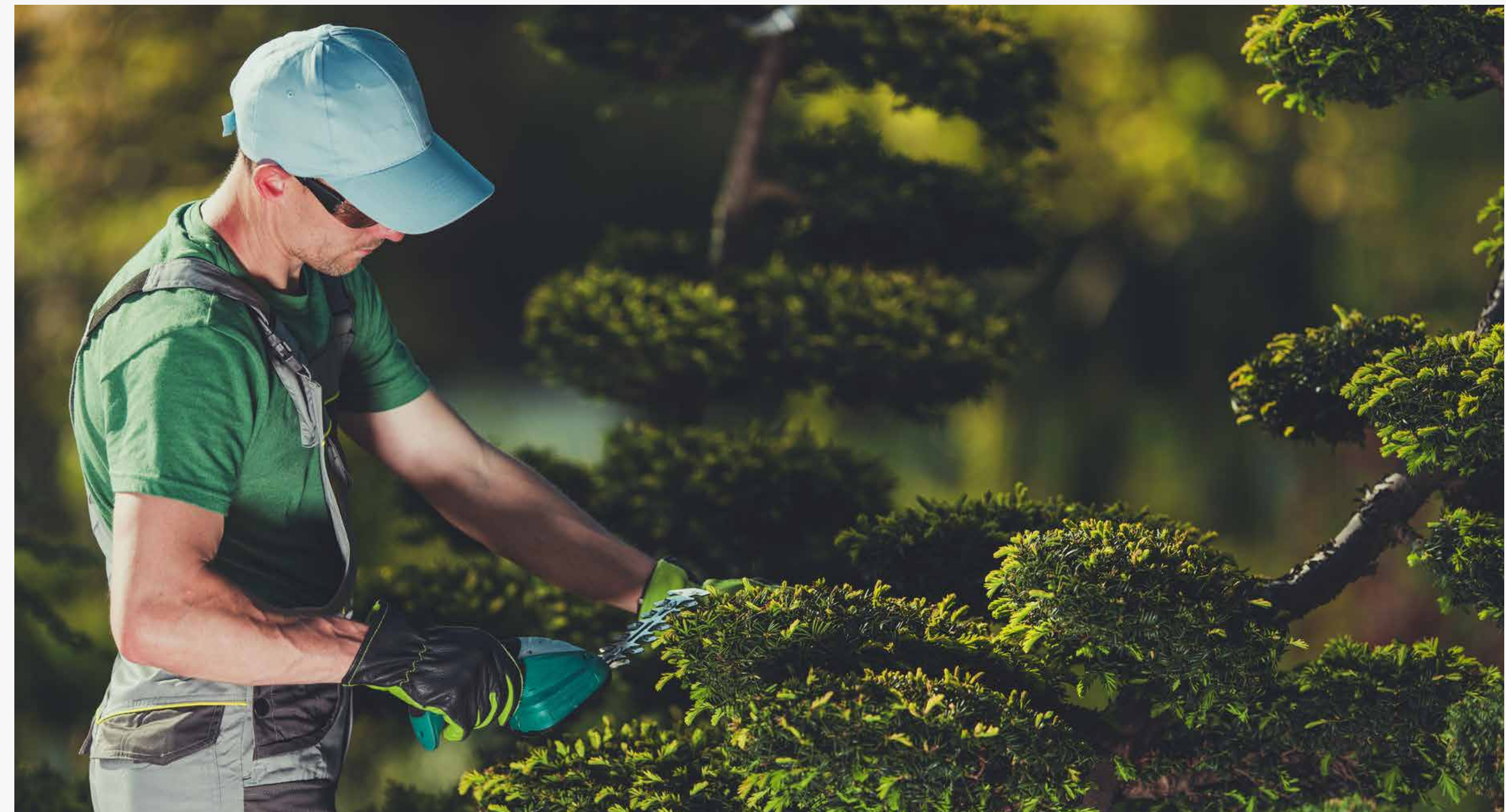
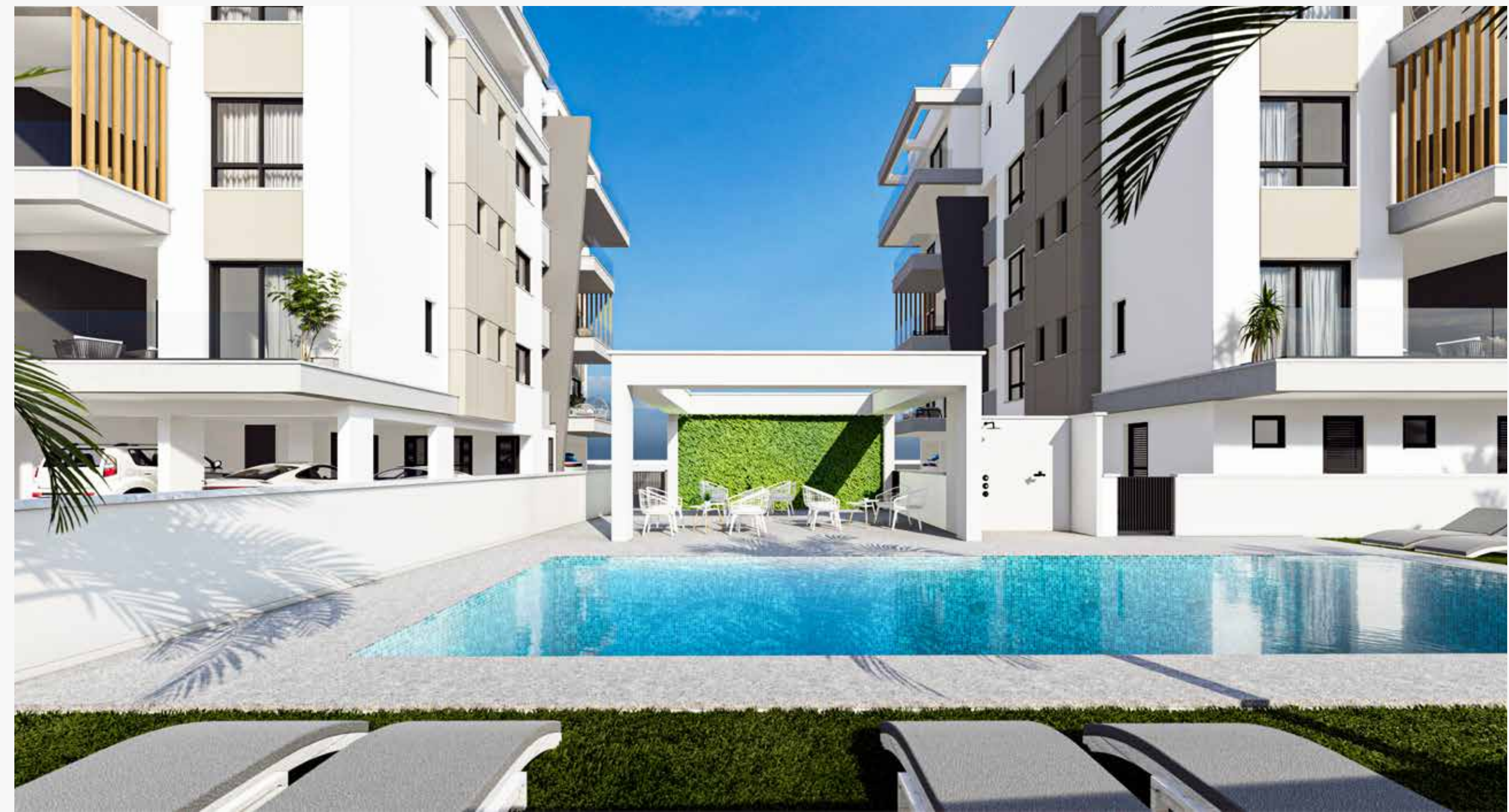
# BEYOND EXPECTATIONS

## *Exclusive Amenities at Residence 28*

---

Residence 28 epitomizes contemporary living with an array of premium amenities designed to enhance comfort and security, a seamless blend of convenience, luxury, and tranquility for its discerning residents.

- Gated Secured Complex
- CCTV for all Common Areas
- Luxury Entrance Lobby
- Decorative Architectural LED Lighting for Common Areas
- Overflow Outdoor Swimming Pool
- Children's Swimming Pool
- Residence Only Events/Conference Facilities
- Fully Landscaped Garden Areas
- Private Secured Parking for Residents
- Property Management Services



# SPECIFICATIONS

## Foundations & Structure

Reinforced Concrete Frame with high yield steel reinforcement, comprising of footings, columns, beams, roof slab and external walls in compliance with Anti-Seismic Code. Columns & beams covered with extruded polystyrene insulation.

## Walls - Plastering

25cm clay bricks in accordance with architectural plans, covered with extruded polystyrene insulation, rendered with Elastic waterproof top coat plaster "Graffito", with decorative cladding as per architects design.

### • INTERNAL WALLS

10cm clay bricks in accordance with architectural plans, with (3) coats of rendering applied and finished with high quality of emulsion paint (3 Coats).

### • CEILING

Fair-faced concrete treated with 2 coats of plaster & finished with high quality of emulsion paint (3 Coats).

### • EXTERNAL RETAINING / BOUNDARY WALLS

Fair-faced concrete with high yield steel reinforcement, rendered as per architects design.

## Insulation / Waterproofing

Bitumen sheet membrane applied to all flat roof areas, balcony areas and concrete surfaces exposed to earth.

## Entrance Doors & Windows

### • SLIDING PATIO DOORS & WINDOWS

(A) Aluminium double casement profile with thermal break of polyamide. Double-glazing consisting of two layers of laminated glass UV filter, filled with gas gap thermal insulation. (Windows with turn & tilt mechanism).

### • EXTERNAL MAIN DOOR

Fire rated high security doors with 6-point security lock.

## Wardrobes & Kitchen Cabinets

### • KITCHEN

European branded high-standard kitchen.

### • BUILT-IN WARDROBES

European branded high-standard internal doors, complete with metal door handle, lock, doorstop and hinges.

### • INTERNAL DOORS

European branded high-standard internal doors, complete with metal door handle, lock, doorstop and hinges.

## Tiling, Flooring & Worktops

Choice from the showrooms of the preferred suppliers of the vendor. Purchaser may choose from any of selections of the supplier within the budgeted allowance stated below for each material. The Purchaser may select materials over the budgeted allowance stated below and bear the cost of the price difference):

### • LIVING & DINING AREAS

Choice of European branded porcelain tiles €25.00 per m2.

### • KITCHEN AREAS

Choice of European branded porcelain tiles €25.00 per m2 (same for kitchen splash back tiles).

### • BATHROOMS

Choice of European branded porcelain tiles €25.00 per m2.

### • BEDROOMS

Choice of European branded parquet flooring €25.00 per m2.

### • BALCONIES & PATIO AREAS

Choice of European branded porcelain tiles for external use €25.00 per m2.

### • INTERNAL COMMON STAIRCASE

High quality marble as per Architects design €65.00 per running meter.

### • WORKTOPS

Choice of synthetic granite worktop €150.00 per running meter.

\* (All floors will be finished with matching skirting)



## Railings / Balustrades

### • BALCONIES

Glass balustrades as per architects design.

### • EXTERNAL

Colour coated aluminium railings as per architects design.

### • STAIRCASE

Colour coated aluminium railings as per architects design.

## Sanitary Ware & Mixer Taps

• Choice of European branded top quality sanitary ware in white porcelain ("Laufen, Jika, Roca or similar).

• Chrome plated accessories, vanity unit, mirror and shower cabin.

• Choice of European branded chrome finish single lever taps (Grohe, Daniel Rubinetterie or similar).

• Choice of High-quality stainless-steel sink for kitchen.



## Plumping & Water Supply

• PVC pipes within a conduit pipe (Pipe in Pipe), Installed from a central distributor, directly to each faucet both hot and cold. (Distributor on each floor).

• Central pressurized water system.

• Continuous flow of water from the local Water Board, with split supply lines for drinking water and separate line direct to concealed individual PVC storage tank.

• Dual System hot water supply with electric immersion heater and solar panel heater, with concealed stainless steel storage tank.

• CPVC pipes will be used for the drainage system which will be connected to the central sewage system of Limassol.

## Lighting

• All balconies will include architecture lighting fittings.

• All common areas will include architecture lighting fittings with sensor.

• Strip lights in suspended ceilings will be included.

## Electrical Installation

• Concealed circuits in accordance with 16th Edition of IEE Electrical Installations and regulations as required by the Cyprus Electric Authority.

• Power supply points and switches as per electrical drawings, comprising of circuits for lighting, power points, TV sockets, telephone points and waterproof sockets where applicable.

• Video Entry system for main door with intercom.

## Security System in Common Areas

Full installation of central CCTV system for common area.

## Heating & Cooling

• Provisions for Split Unit Air-condition in all bedrooms and living room areas.

• Electric Underflooring heating in all areas.



## Smart Home Automation

• 7" smart control panel in every apartment.

• Smart light switches.

• Security Motion Sensors and Security Open/close detection sensor for security.

• Temperature and humidity sensor.

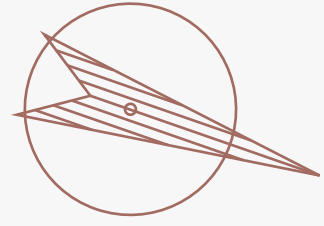
• Smart climate control for underfloor heating, A/C and boiler.

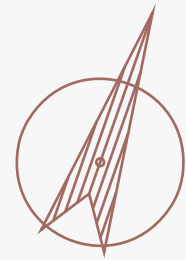
• Water leaking detector sensor.

• Smart Curtain control.

*\* The developer reserves the right to change and/ or amend the above specifications with similar standard and value without prior notice. Changes to the specifications may be requested. Any changes requested must be within the relevant building regulations and governing laws, within good building practice and in no way negatively affect the overall aesthetics of either the property or project itself.*

# 28 | RESIDENCE TWENTY EIGHT MASTERPLAN





## BUILDING A 1st FLOOR

### APARTMENT A101

Bedrooms:	3
Covered Indoor Area:	107.5m <sup>2</sup>
Covered Veranda Area:	20m <sup>2</sup>
Un-covered Veranda Area:	7.5m <sup>2</sup>
Common Area:	16.5m <sup>2</sup>
Storage Room Area:	2.5m <sup>2</sup>
<b>Total Area:</b>	<b>154m<sup>2</sup></b>

### APARTMENT A102

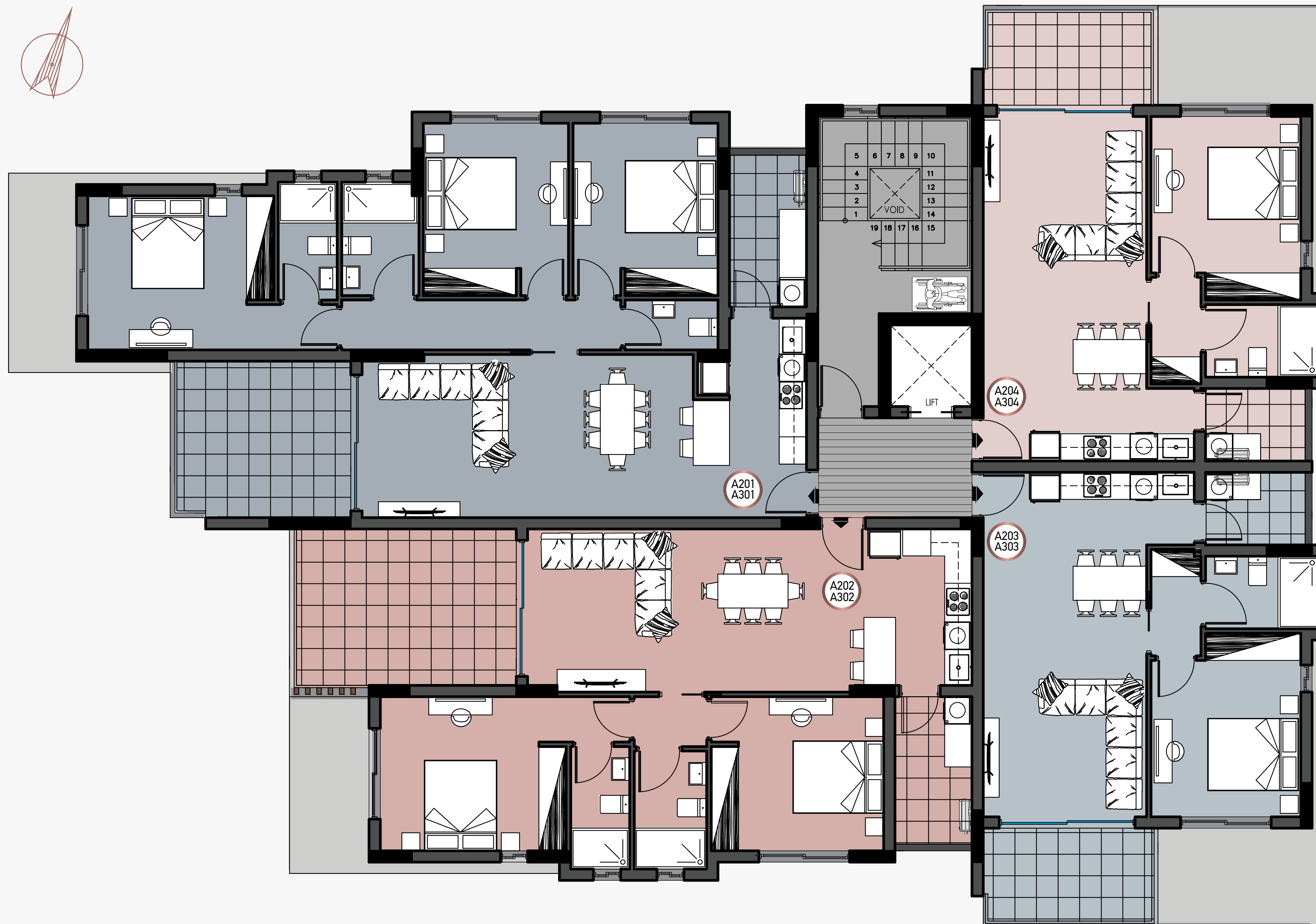
Bedrooms:	2
Covered Indoor Area:	83.5m <sup>2</sup>
Covered Veranda Area:	23.5m <sup>2</sup>
Un-covered Veranda Area:	6.5m <sup>2</sup>
Common Area:	13m <sup>2</sup>
Storage Room Area:	2.5m <sup>2</sup>
<b>Total Area:</b>	<b>129m<sup>2</sup></b>

### APARTMENT A103

Bedrooms:	1
Covered Indoor Area:	56m <sup>2</sup>
Covered Veranda Area:	13m <sup>2</sup>
Un-covered Veranda Area:	7.5m <sup>2</sup>
Common Area:	9m <sup>2</sup>
Storage Room Area:	2.5m <sup>2</sup>
<b>Total Area:</b>	<b>88m<sup>2</sup></b>

### APARTMENT A104

Bedrooms:	1
Covered Indoor Area:	56m <sup>2</sup>
Covered Veranda Area:	13m <sup>2</sup>
Un-covered Veranda Area:	7.5m <sup>2</sup>
Common Area:	9m <sup>2</sup>
Storage Room Area:	2.5m <sup>2</sup>
<b>Total Area:</b>	<b>88m<sup>2</sup></b>



## BUILDING A 2nd FLOOR & 3rd FLOOR

### APARTMENT A201/A301

Bedrooms:	3
Covered Indoor Area:	107.5m <sup>2</sup>
Covered Veranda Area:	20m <sup>2</sup>
Un-covered Veranda Area:	-
Common Area:	16.5m <sup>2</sup>
Storage Room Area:	2.5m <sup>2</sup>
<b>Total Area:</b>	<b>146.5m<sup>2</sup></b>

### APARTMENT A202/A302

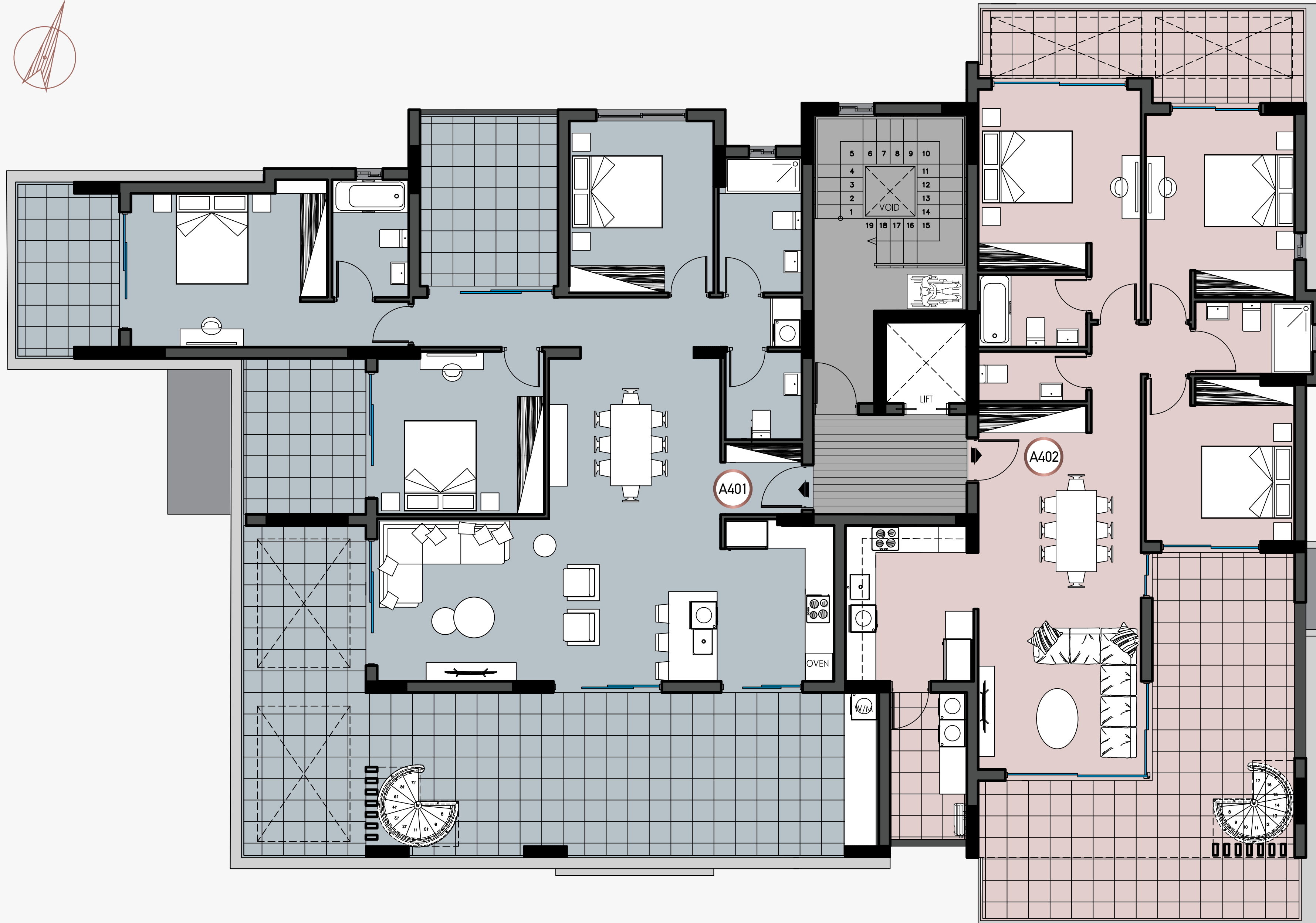
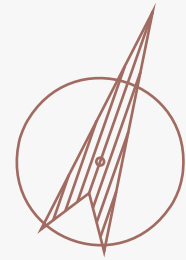
Bedrooms:	2
Covered Indoor Area:	83.5m <sup>2</sup>
Covered Veranda Area:	23.5m <sup>2</sup>
Un-covered Veranda Area:	-
Common Area:	13m <sup>2</sup>
Storage Room Area:	2.5m <sup>2</sup>
<b>Total Area:</b>	<b>122.5m<sup>2</sup></b>

### APARTMENT A203/A303

Bedrooms:	1
Covered Indoor Area:	56m <sup>2</sup>
Covered Veranda Area:	13m <sup>2</sup>
Un-covered Veranda Area:	-
Common Area:	9m <sup>2</sup>
Storage Room Area:	2.5m <sup>2</sup>
<b>Total Area:</b>	<b>80.5m<sup>2</sup></b>

### APARTMENT A204/304

Bedrooms:	1
Covered Indoor Area:	56m <sup>2</sup>
Covered Veranda Area:	13m <sup>2</sup>
Un-covered Veranda Area:	-
Common Area:	9m <sup>2</sup>
Storage Room Area:	2.5m <sup>2</sup>
<b>Total Area:</b>	<b>80.5m<sup>2</sup></b>



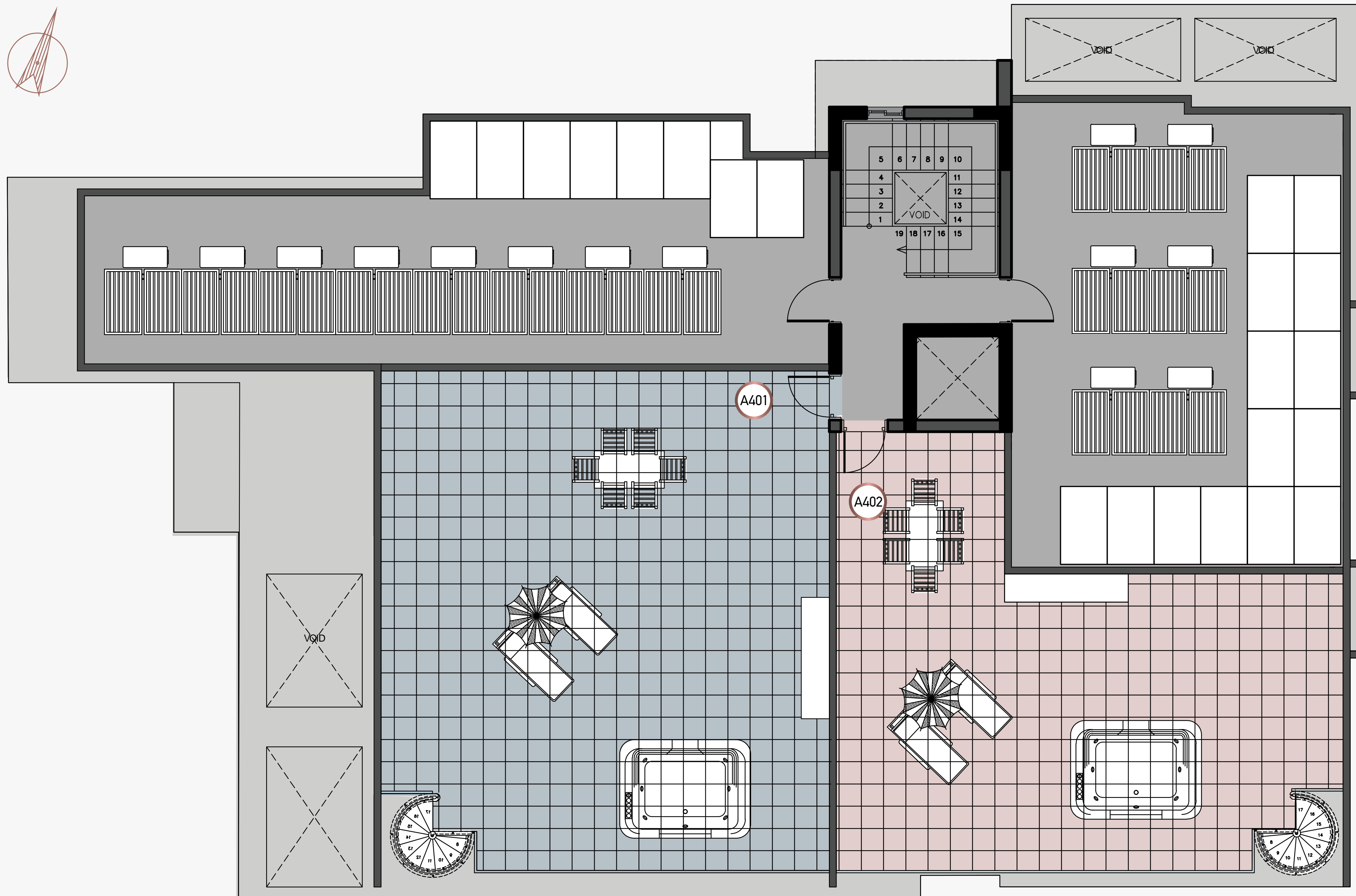
**28**  
BUILDING A  
PENTHOUSE FLOOR

**APARTMENT A401**

Bedrooms:	3+
Covered Indoor Area:	136m <sup>2</sup>
Covered Veranda Area:	53.5m <sup>2</sup>
Un-covered Veranda Area:	147.5m <sup>2</sup>
Common Area:	21m <sup>2</sup>
Storage Room Area:	3m <sup>2</sup>
<b>Total Area:</b>	<b>361m<sup>2</sup></b>

**APARTMENT A402**

Bedrooms:	3
Covered Indoor Area:	108m <sup>2</sup>
Covered Veranda Area:	37m <sup>2</sup>
Un-covered Veranda Area:	108.5m <sup>2</sup>
Common Area:	16.5m <sup>2</sup>
Storage Room Area:	3m <sup>2</sup>
<b>Total Area:</b>	<b>273m<sup>2</sup></b>



## BUILDING A ROOF FLOOR

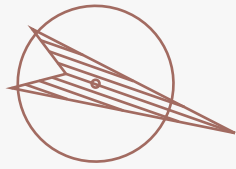
### APARTMENT A401

Bedrooms:	3+
Covered Indoor Area:	136m <sup>2</sup>
Covered Veranda Area:	53.5m <sup>2</sup>
Un-covered Veranda Area:	147.5m <sup>2</sup>
Common Area:	21m <sup>2</sup>
Storage Room Area:	3m <sup>2</sup>
<b>Total Area:</b>	<b>361m<sup>2</sup></b>

### APARTMENT A402

Bedrooms:	3
Covered Indoor Area:	108m <sup>2</sup>
Covered Veranda Area:	37m <sup>2</sup>
Un-covered Veranda Area:	108.5m <sup>2</sup>
Common Area:	16.5m <sup>2</sup>
Storage Room Area:	3m <sup>2</sup>
<b>Total Area:</b>	<b>273m<sup>2</sup></b>





**BUILDING B**  
**1st FLOOR**



**APARTMENT B101**

Bedrooms:	2
Covered Indoor Area:	83.5m <sup>2</sup>
Covered Veranda Area:	18m <sup>2</sup>
Un-covered Veranda Area:	7.5m <sup>2</sup>
Common Area:	10.5m <sup>2</sup>
Storage Room Area:	3.5m <sup>2</sup>
<b>Total Area:</b>	<b>123m<sup>2</sup></b>

**APARTMENT B102**

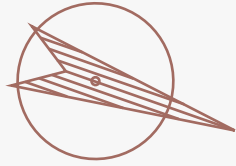
Bedrooms:	3
Covered Indoor Area:	109m <sup>2</sup>
Covered Veranda Area:	26m <sup>2</sup>
Un-covered Veranda Area:	-
Common Area:	13.5m <sup>2</sup>
Storage Room Area:	3.5m <sup>2</sup>
<b>Total Area:</b>	<b>152m<sup>2</sup></b>

**APARTMENT B103**

Bedrooms:	1
Covered Indoor Area:	56.5m <sup>2</sup>
Covered Veranda Area:	19m <sup>2</sup>
Un-covered Veranda Area:	-
Common Area:	7m <sup>2</sup>
Storage Room Area:	3.5m <sup>2</sup>
<b>Total Area:</b>	<b>86m<sup>2</sup></b>

**APARTMENT B104**

Bedrooms:	2
Covered Indoor Area:	86.5m <sup>2</sup>
Covered Veranda Area:	30m <sup>2</sup>
Un-covered Veranda Area:	-
Common Area:	11m <sup>2</sup>
Storage Room Area:	3.5m <sup>2</sup>
<b>Total Area:</b>	<b>131m<sup>2</sup></b>



## BUILDING B 2nd FLOOR & 3rd FLOOR

### APARTMENT B201/B301

Bedrooms:	2
Covered Indoor Area:	83.5m <sup>2</sup>
Covered Veranda Area:	19m <sup>2</sup>
Un-covered Veranda Area:	-
Common Area:	10.5m <sup>2</sup>
Storage Room Area:	3.5m <sup>2</sup>
<b>Total Area:</b>	<b>116.5m<sup>2</sup></b>

### APARTMENT B202/B302

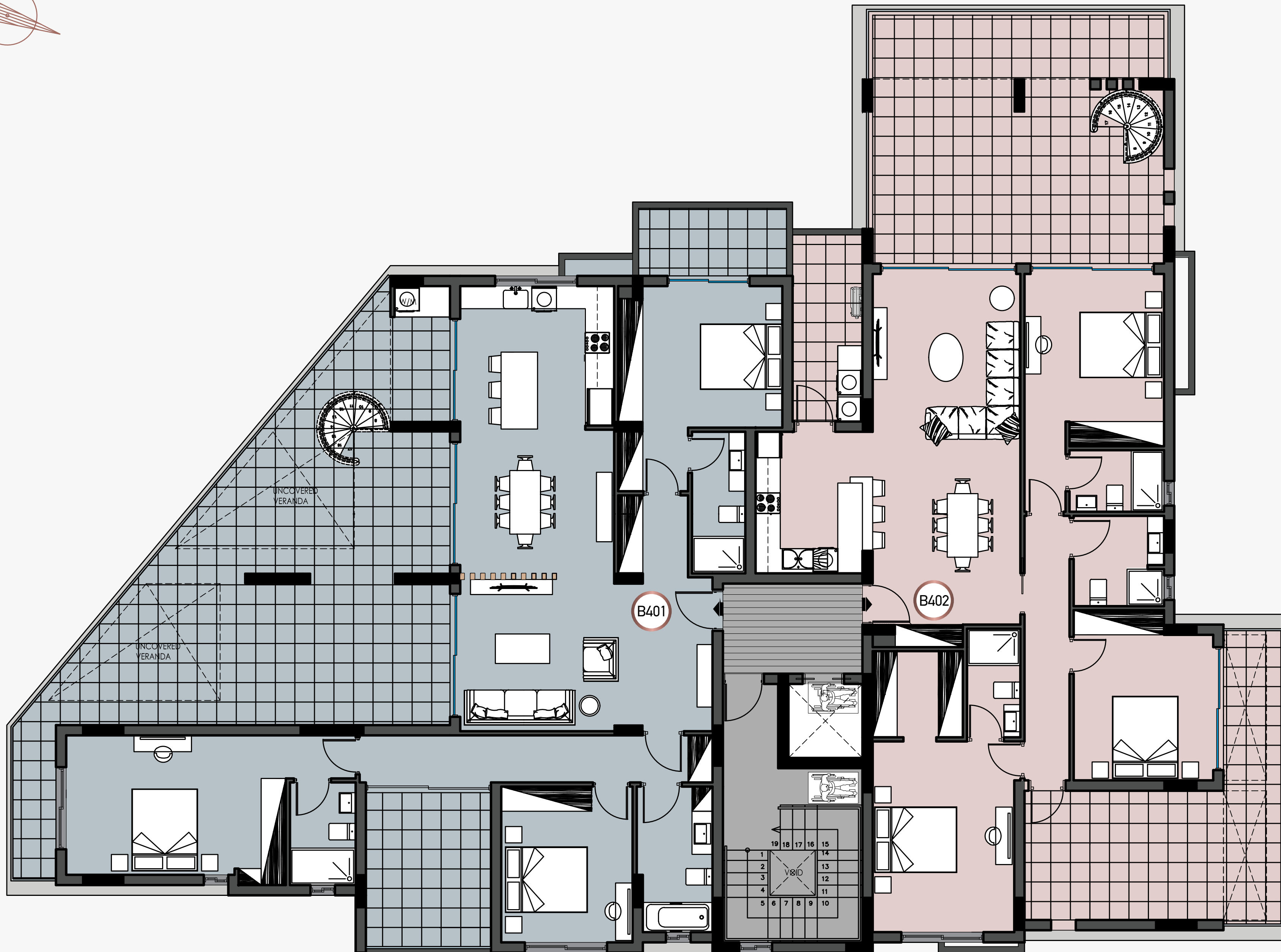
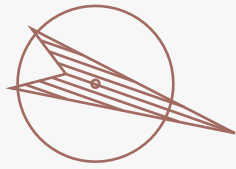
Bedrooms:	3
Covered Indoor Area:	109m <sup>2</sup>
Covered Veranda Area:	21m <sup>2</sup>
Un-covered Veranda Area:	-
Common Area:	13.5m <sup>2</sup>
Storage Room Area:	3.5m <sup>2</sup>

### APARTMENT B203/B303

Bedrooms:	1
Covered Indoor Area:	56.5m <sup>2</sup>
Covered Veranda Area:	11m <sup>2</sup>
Un-covered Veranda Area:	-
Common Area:	7m <sup>2</sup>
Storage Room Area:	3.5m <sup>2</sup>
<b>Total Area:</b>	<b>78m<sup>2</sup></b>

### APARTMENT B204/B04

Bedrooms:	2
Covered Indoor Area:	86.5m <sup>2</sup>
Covered Veranda Area:	17m <sup>2</sup>
Un-covered Veranda Area:	-
Common Area:	11m <sup>2</sup>
Storage Room Area:	3.5m <sup>2</sup>
<b>Total Area:</b>	<b>118m<sup>2</sup></b>



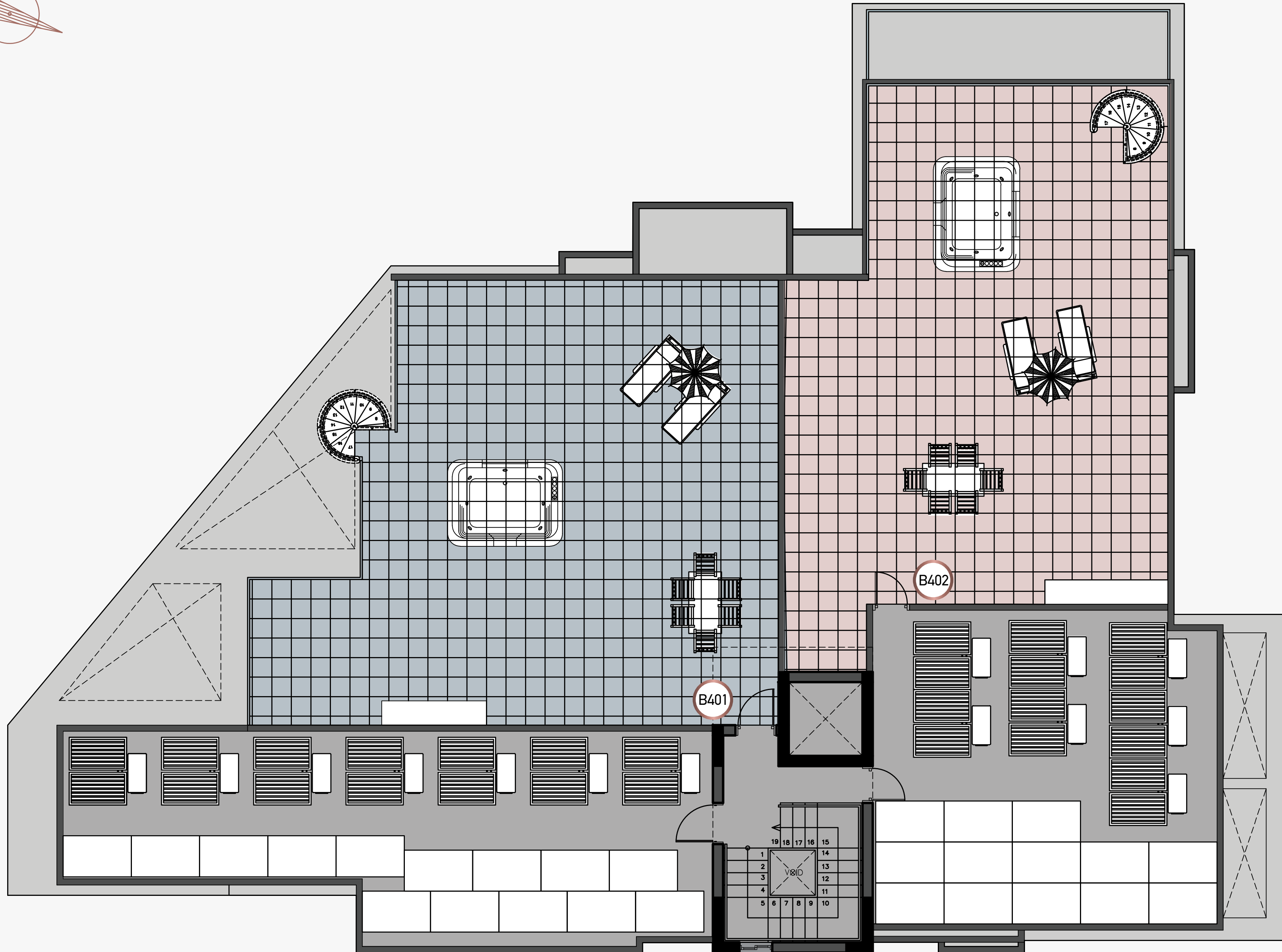
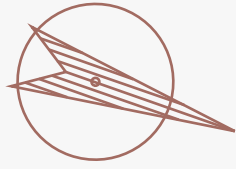
## BUILDING B PENTHOUSE FLOOR

### APARTMENT B401

Bedrooms:	3+
Covered Indoor Area:	146m <sup>2</sup>
Covered Veranda Area:	38m <sup>2</sup>
Un-covered Veranda Area:	172m <sup>2</sup>
Common Area:	18.5m <sup>2</sup>
Storage Room Area:	6m <sup>2</sup>
<b>Total Area:</b>	<b>380.5m<sup>2</sup></b>

### APARTMENT B402

Bedrooms:	3+
Covered Indoor Area:	125m <sup>2</sup>
Covered Veranda Area:	45m <sup>2</sup>
Un-covered Veranda Area:	61m <sup>2</sup>
Common Area:	16m <sup>2</sup>
Storage Room Area:	6m <sup>2</sup>
<b>Total Area:</b>	<b>253m<sup>2</sup></b>



**28**  
BUILDING B  
PENTHOUSE FLOOR

**APARTMENT B401**

Bedrooms:	3+
Covered Indoor Area:	146m <sup>2</sup>
Covered Veranda Area:	38m <sup>2</sup>
Un-covered Veranda Area:	172m <sup>2</sup>
Common Area:	18.5m <sup>2</sup>
Storage Room Area:	6m <sup>2</sup>
<b>Total Area:</b>	<b>380.5m<sup>2</sup></b>

**APARTMENT B402**

Bedrooms:	3+
Covered Indoor Area:	125m <sup>2</sup>
Covered Veranda Area:	45m <sup>2</sup>
Un-covered Veranda Area:	61m <sup>2</sup>
Common Area:	16m <sup>2</sup>
Storage Room Area:	6m <sup>2</sup>
<b>Total Area:</b>	<b>253m<sup>2</sup></b>



RESIDENCE  
TWENTY EIGHT

## Smart Home

### BUILDING A

APT. NO.	BEDROOMS	COVERED INDOOR M <sup>2</sup>	COVERED VERANDA M <sup>2</sup>	UN-COVERED VERANDA M <sup>2</sup>	COMMON AREA M <sup>2</sup>	STORAGE ROOM AREA M <sup>2</sup>	TOTAL AREA M <sup>2</sup>	EURO PRICE € (BEFORE VAT)
A101	3	107.5	20	7.5	16.5	2.5	154	€515,000
A102	2	83.5	23.5	6.5	13	2.5	129	<b>SOLD</b>
A103	1	56	13	7.5	9	2.5	88	<b>SOLD</b>
A104	1	56	13	7.5	9	2.5	88	€290,000
A201	3	107.5	20	-	16.5	2.5	146.5	€545,000
A202	2	83.5	23.5	-	13	2.5	122.5	€460,000
A203	1	56	13	-	9	2.5	80.5	€305,000
A204	1	56	13	-	9	2.5	80.5	€305,000
A301	3	107.5	20	-	16.5	2.5	146.5	€575,000
A302	2	83.5	23.5	-	13	2.5	122.5	€480,000
A303	1	56	13	-	9	2.5	80.5	€320,000
A304	1	56	13	-	9	2.5	80.5	€320,000
A401	3+	136	53.5	147.5	21	3	361	€1,250,000
A402	3	108	37	108.5	16.5	3	273	€950,000
<b>14 UNITS</b>		<b>1153</b>	<b>299</b>	<b>285</b>	<b>180</b>	<b>36</b>	<b>1953</b>	<b>€6,315,000</b>

### BUILDING B

APT. NO.	BEDROOMS	COVERED INDOOR M <sup>2</sup>	COVERED VERANDA M <sup>2</sup>	UN-COVERED VERANDA M <sup>2</sup>	COMMON AREA M <sup>2</sup>	STORAGE ROOM AREA M <sup>2</sup>	TOTAL AREA M <sup>2</sup>	EURO PRICE € (BEFORE VAT)
B101	2	83.5	18	7.5	10.5	3.5	123	<b>SOLD</b>
B102	3	109	26	-	13.5	3.5	152	<b>SOLD</b>
B103	1	56.5	19	-	7	3.5	86	<b>SOLD</b>
B104	2	86.5	30	-	11	3.5	131	€465,000
B201	2	83.5	19	-	10.5	3.5	116.5	€435,000
B202	3	109	21	-	13.5	3.5	147	€545,000
B203	1	56.5	11	-	7	3.5	78	<b>SOLD</b>
B204	2	86.5	17	-	11	3.5	118	€440,000
B301	2	83.5	19	-	10.5	3.5	116.5	€460,000
B302	3	109	21	-	13.5	3.5	147	<b>SOLD</b>
B303	1	56.5	11	-	7	3.5	78	€315,000
B304	2	86.5	17	-	11	3.5	118	€465,000
B401	3+	146	38	172	18.5	6	380.5	€1,250,000
B402	3+	125	45	61	16	6	253	€1,100,000
<b>14 UNITS</b>		<b>1277.5</b>	<b>312</b>	<b>240.5</b>	<b>160.5</b>	<b>54</b>	<b>2044.5</b>	<b>€5,475,000</b>

### SPECIFICATIONS & AMENITIES

<ul style="list-style-type: none"> <li>• Custom Designed Kitchens &amp; Wardrobes <ul style="list-style-type: none"> <li>• Granite Worktops</li> </ul> </li> <li>• Travertine or porcelain flooring <ul style="list-style-type: none"> <li>• Sanitary Ware (Roca)</li> <li>• Mixers &amp; taps (Grohe)</li> </ul> </li> <li>• Air Conditioning Provision <ul style="list-style-type: none"> <li>• Under Flooring Heating</li> </ul> </li> <li>• Decorative ceilings with hidden lighting <ul style="list-style-type: none"> <li>• Pressurized Water System</li> <li>• Pipe in Pipe plumbing System</li> <li>• Solar Panel Water Heating</li> </ul> </li> </ul>	<ul style="list-style-type: none"> <li>• Smart light Control board</li> <li>• Gated Secured Complex</li> <li>• CCTV for all Common Areas <ul style="list-style-type: none"> <li>• Luxury entrance Lobby</li> <li>• Security Door</li> </ul> </li> <li>• Video Phone Entry System</li> <li>• Decorative Architectural LED lighting for Common Areas</li> <li>• Overflow outdoor Swimming Pool</li> <li>• Fully Landscaped Garden areas <ul style="list-style-type: none"> <li>• Covered secured Parking</li> <li>• Private Storeroom</li> </ul> </li> <li>• Thermal Insulation throughout (extruded polystyrene)</li> </ul>
--	--

**NOTES:**

1. The above property's measurements are to the nearest. Changes to the specifications and/or drawings may be requested by purchaser at extra cost. The developer reserves the right at their discretion to refuse any changes.
2. The properties & prices are subject to availability & can be changed without prior notice at the company's discretion.